

ERRATUM

REFERENCE: Nennstiel R, Rahm J. A parameter study regarding the IBIS correlator. *J Forensic Sci* 2006;51(1):18–23.
 We regret that the legends were inadvertently left out of the figures. The correct figures appear below.

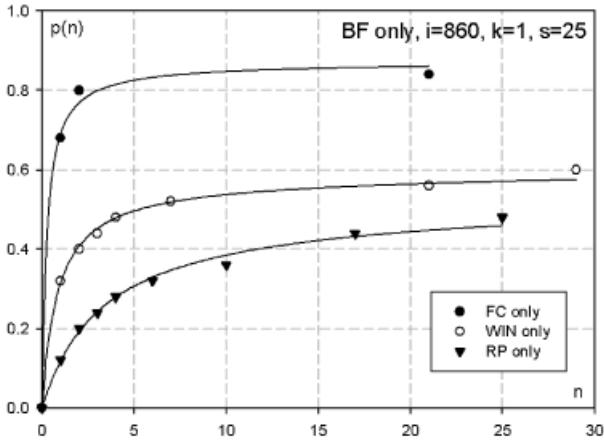


FIG. 1

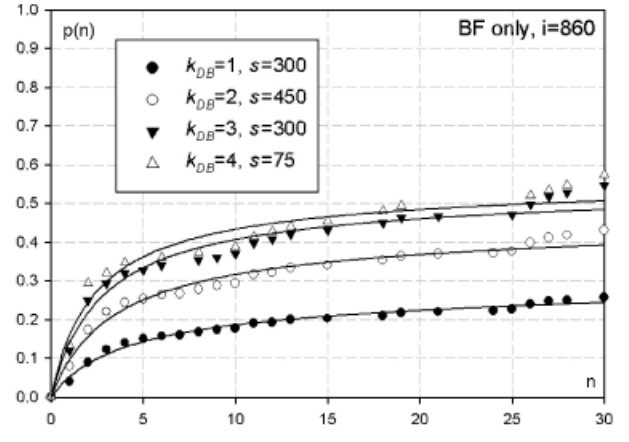


FIG. 4

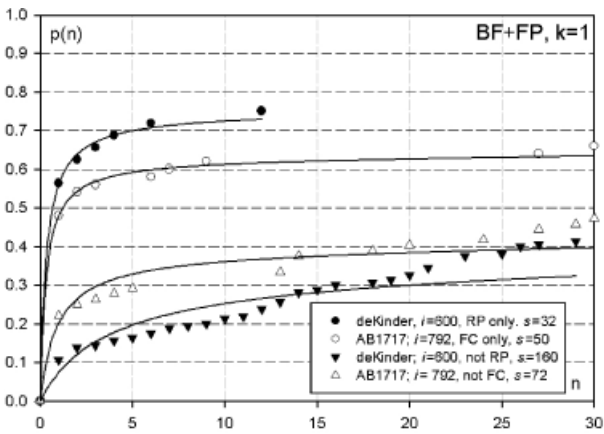


FIG. 2

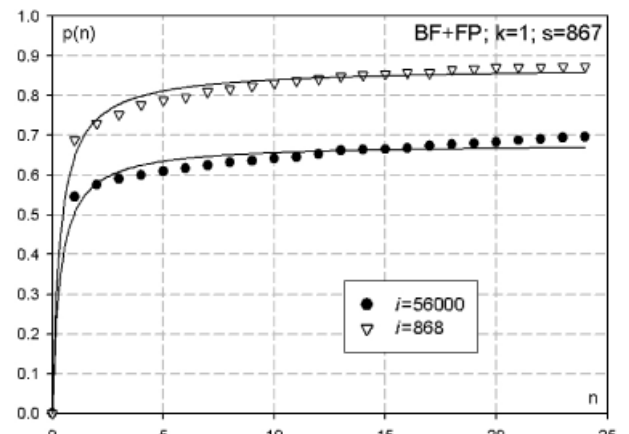


FIG. 5

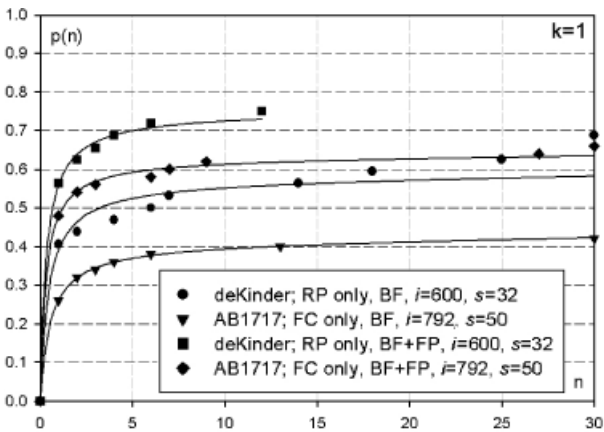


FIG. 3